

**Specifications:**

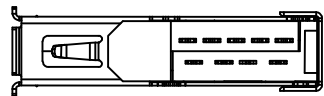
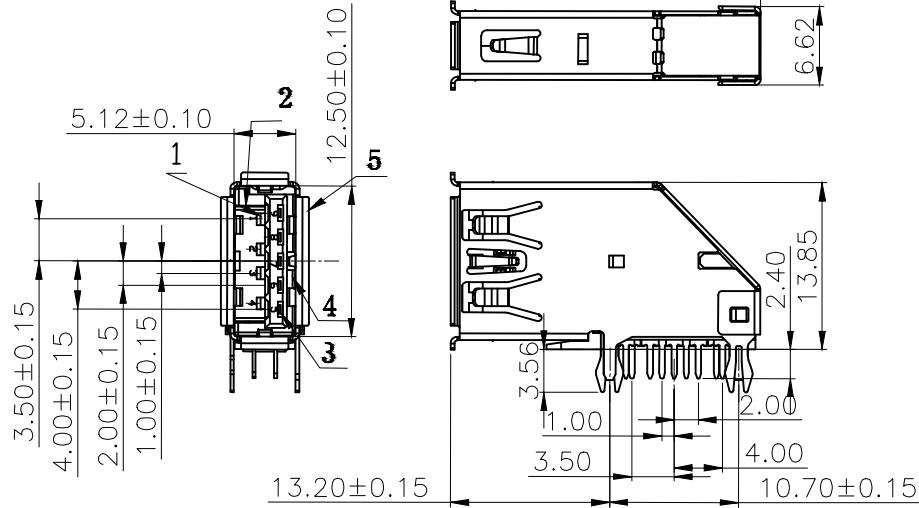
Contact Current Rating: 1.8 Amperes for pin1 & pin4.  
0.25 Amperes other contacts  
Dielectric Withstanding Voltage: AC 100V(RMS)  
Insulation Resistance: 100Megohms Minimum.  
Contact Resistance: 30mΩ Max for pin1 & pin4  
50mΩ Max for other contacts  
Operating Temperature: -55°to+85°

**Mechanical Characteristics:**

Mating Force: 3.5 Newtons.Maximum  
Unmating Force: 10 Newtons.Minimum.

Part No: WCT-USB3-04 A F2 09 1 P S 2 S 3 E  
1 2 3 4 5 6 7 8 9 10 11

- 1.Products Distination : USB.=USB 3.0
- 2.Type Difference : A=A TYPE
- 3.Specifications Distination : F2=Female To Board
- 4.Pin : 09=09Pin
- 5.Housing Material : 1=PBT
- 6.Special Practice : P=Side Entry With Shell foot
- 7.Shell Material : S=SUS
- 8.Housing Color : 2=Blue
- 9.Contact Plating : S=Gold Flash
- 10.Package : 3=Tray
- 11.Environmental : E=RoHS(Bright)

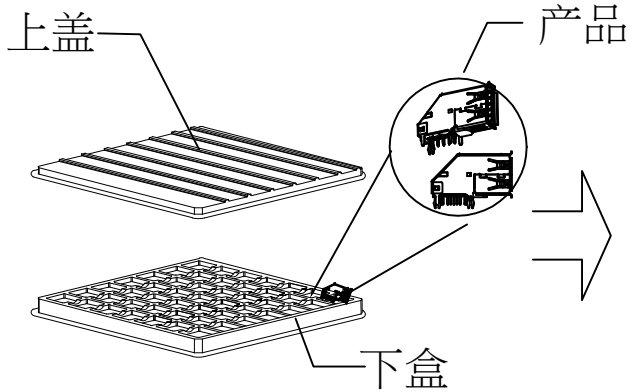


ITEM	PART NAME	Material	Q'TY	REMARK
1	4P Semi-manufactured Goods	Housing PBT	1	Black &Blue UL94V-0
2	Contact	COPPER ALLOY	4	T=0.25 Plating Gld/Tin
3	5P Semi-manufactured Goods	Housing PBT	1	Black &Blue UL94V-0
4	Contact	COPPER ALLOY	5	T=0.25 Plating Gld/Tin
5	Shell	SUS304-1/2H	1	T=0.3

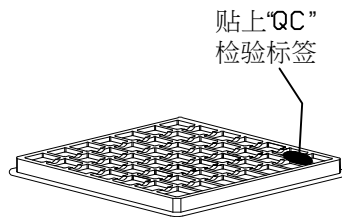
Pin Number	Signal Name	Pin Number	Signal Name
1	VBUS	5	SSRX-
2	D-	6	SSRX+
3	D+	7	GND
4	GND	8	SSTX-
Shell	Shield	9	SSRT+

允祿科技有限公司  
WINCONN TECHNOLOGY CO., LTD.

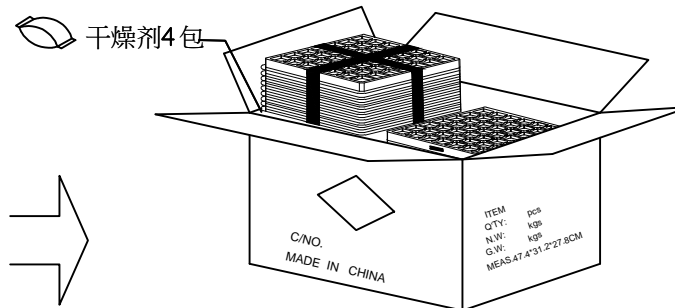
Title		USB 3.0 A Type 9P Female DIP 90° Side Entry With Shell foot			
Tolerances	Drawer	Naomi	Part No:		
	Checked	Summer	WCT-USB3-04AF2091PS2S3E		
Linear	Approved	Macus	Cus. Part No:		
	Date	2017.07.04	WCT-USB3-04AF2091PS2S3E		
Angles	Projection	Version	Size	A4	Units
± 3°		A	Scale	1:1	Sheet 1/2



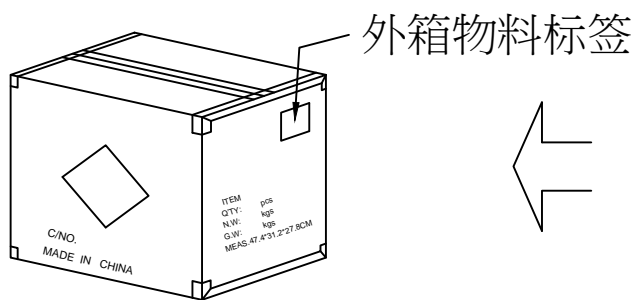
① PE 真空格子盒(1Set),64Pcs/盒



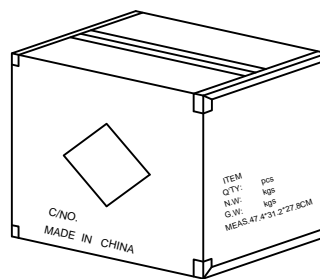
② 每10盘用透明胶带绑紧捆



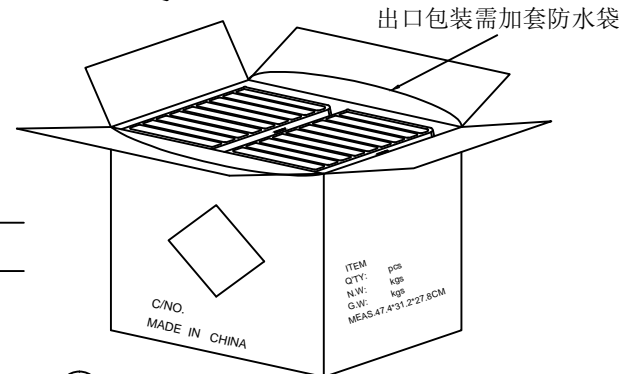
③ 4捆(40盘)/箱(2.5k).



⑥ 依图示粘贴产品其它标签.



⑤ 外箱用透明胶纸带封“工”字型.



④ 每箱平放2排产品,若尾数箱在空间处加装填充物.

备注:

1. PE 真空盒1Set
2. 每盒装成品64Pcs, 每10盘用透明胶带绑紧/捆
3. 每箱装40盘(2.5K); 并放干燥剂
4. 外箱尺寸与规格印刷: 详见包材图面;
5. 外箱用透明胶纸带封“工”字型
6. 依外箱图示位置粘贴好产品或其它标签  
(若客户另有贴标签要求, 则按其定单注明之要求贴)

每箱数量	净重	毛重
2.5K套/箱	8.93KG	11.35KG



Title	USB 3.0 A Type 9P Female DIP 90° Side Entry With Shell foot					
Tolerances	Drawer	Naomi	Part No:			
Linear	Checked	Summer	WCT-USB3-04AF2091PS2S3E			
X ±0.15 .X ±0.05	Approved	Macus	Cus. Part No:			
	Date	2017.07.04	WCT-USB3-04AF2091PS2S3E			
Angles	Projection	Version	Size	A4	Units	mm
± 3°		A	Scale	1:1	Sheet	2/2