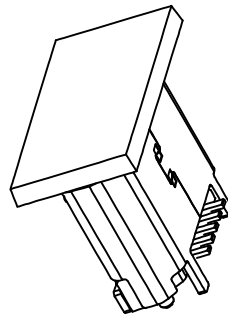
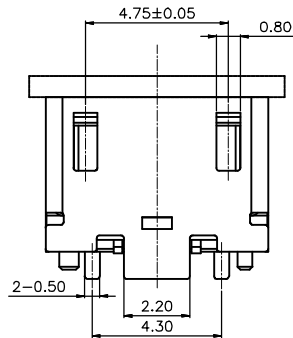
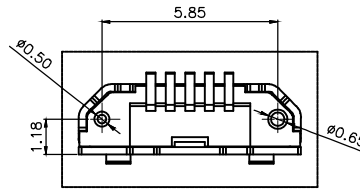
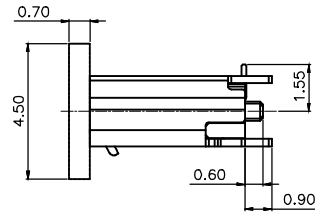
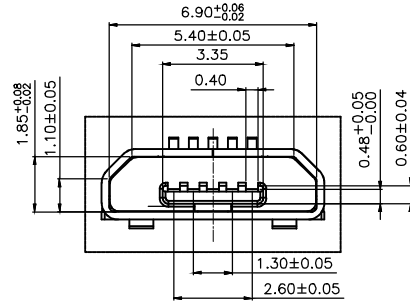


RECOMMENDED P.C.B. LAYOUT  
TOLERANCE ±0.03mm)



**Material:**  
Housing: See Table+30% G.F. UL 94V-0  
Contact: Copper C5191  
Shell: SUS 301  
Hook: SUS 301

**Mechanical:**  
Mating Force: 35N Max  
Withdrawal Force: 8N Min  
Durability: 10000 Cycles Min

**Electrical:**  
Current Rating: 1A Max  
Voltage: 30V Max  
Dielectric Withstanding Voltage: 100 V(ac) FOR 1 Mlin  
Contact Resistance: 30 MΩ Max  
Insulation Resistance: 100 MΩ Min

**Environmental**  
Temperature Range: -30°C~80°C

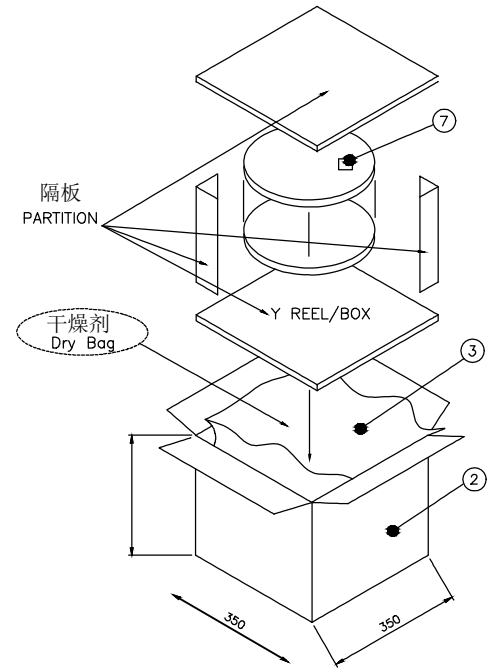
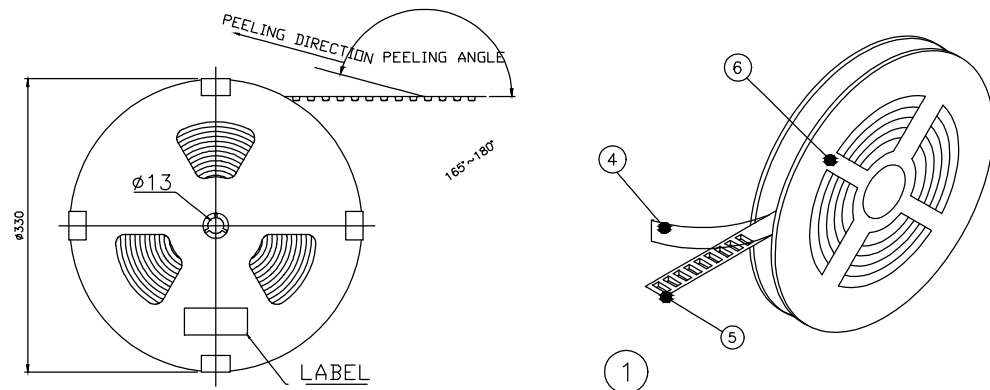
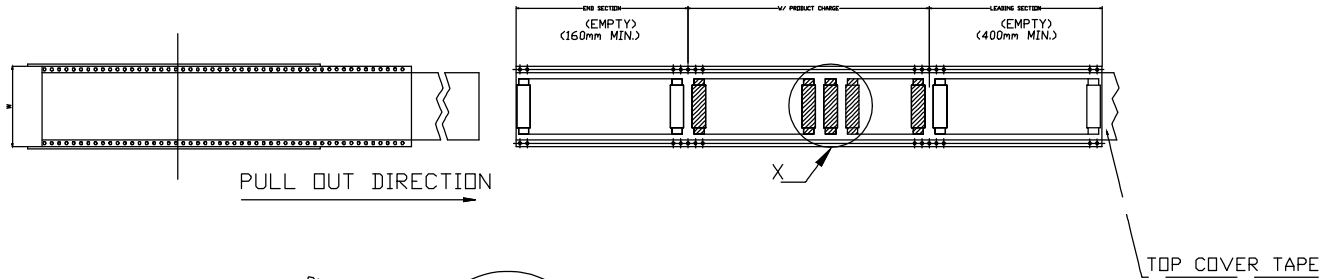
Part No: WCT-MCU-03 B F2 05 6 N3 S 3 S 5 E  
1 2 3 4 5 6 7 8 9 10 11

- 1.Products Distination : MCU=Micro USB
- 2.Type Difference : B=B Type
- 3.Specifications Distination : F2=Female To Board
- 4.Pin : 05=5Pin
- 5.Housing Material : 6=LCP
- 6.Special Practice : N3=SMT 180° With DIP Shell Foot & Post
- 7.Shell Material : S=SUS
- 8.Housing Color : 3=Black
- 9.Contact Plating : S=Gold Flash
- 10.Package : 5=Reel
- 11.Environmental : E=RoHS(Bright)

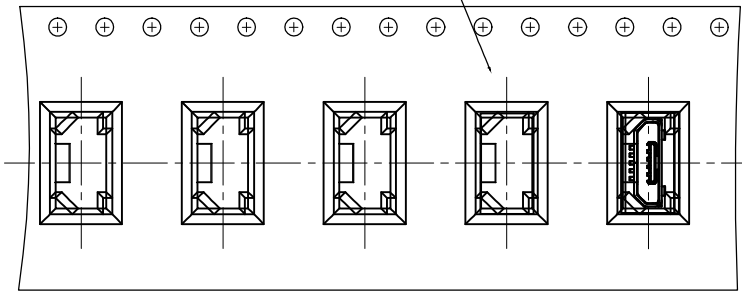
4	CAP	1	SYNTHETIC RESIN	BLACK
3	HOUSING	1	SYNTHETIC RESIN	BLACK
2	CONTACT	5	COPPER ALLOY	GOLD FLASH,50u" Ni-Plated
1	SHELL	1	STAINLESS	50u" Ni-Plated
LTR	PART NAME	QTY	MATERIAL	REMARK



<b>Title</b>	Micro USB B Type Female 5P SMT 180°					
<b>Tolerances</b>	<i>Drawer</i>	<i>Naomi</i>	<i>Part No:</i>			
<i>Linear</i>	<i>Checked</i>	<i>Summer</i>	WCT-MCU-03BF2056N3S3S5E			
X ±0.15	<i>Approved</i>	<i>Macus</i>	<i>Cus. Part No:</i>			
.X ±0.05	<i>Date</i>	2017.07.08	WCT-MCU-03BF2056N3S3S5E			
<b>Angles</b>	<i>Projection</i>	<i>Version</i>	<i>Size</i>	<i>A4</i>	<i>Units</i>	<i>mm</i>
± 3°		A	<i>Scale</i>	1:1	<i>Sheet</i>	1/2



收料方向  
CARRIER MATERIAL  
DIRECTION



ITEM 项目	PARTS NAME 零件名称	FINISH REMARK 处理/备注
1	I/O CONNECTOR	4200 PCS/BOX
2	BOX	6PCS REEL/BOX
3	WATERPROOF BAG	1 PCS
4	REEL	700PCS/REEL
5	COVER TAPE	Wide=24mm
6	CARRIER TAPE	14.5/REEL
7	LABEL	批号标签

NOTES  
1.MATERIAL: PS (透明白)  
2.DEFORMATION(变形)&DAMAGE(损坏): NA.(不可)



Title		Micro USB B Type Female 5P SMT 180°			
Tolerances	Drawer	Naomi	Part No:		
	Linear	Checked	Summer	WCT-MCU-03BF2056N3S3S5E	
X ±0.15 .X ±0.05	Approved	Macus	Cus. Part No:		
	Date	2017.07.08	WCT-MCU-03BF2056N3S3S5E		
Angles	Projection	Version	Size	A4	Units
± 3°		A	Scale	1:1	Sheet 2/2